

SC90E Polyurethane Arm Replacement

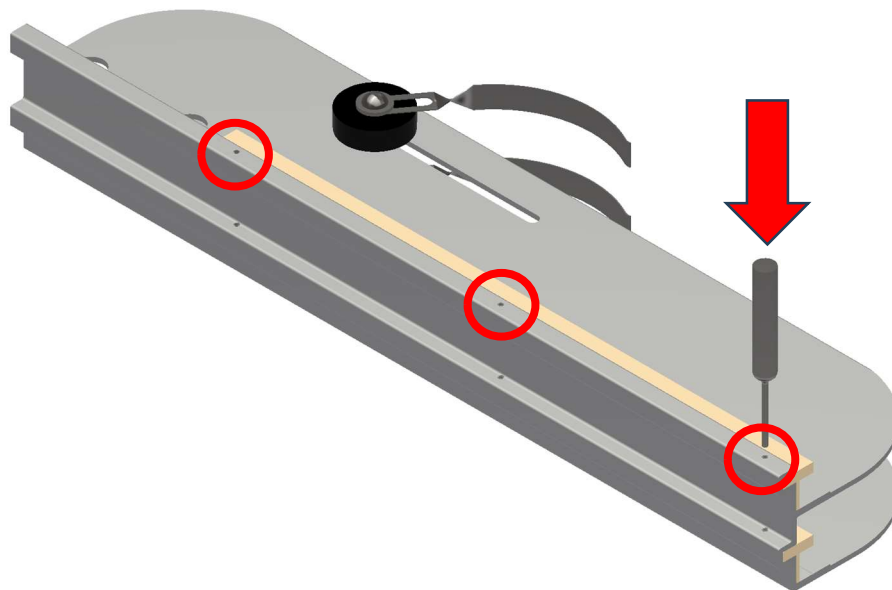
Required Tools	Required Components
3/4" Wrench or Socket with Ratchet	6 - SC154P – 3/32 Roll Pin
3/32" Pin Punch	2 – SC159 – Polyurethane Rail
Hammer	
3/32" Drill Bit	
Drill	
Clamp (Optional)	

Step 1:

Make sure the machine is in the released position to ensure it cannot fire. Remove the throwing arm assembly from the carrier by removing the two 3/4" drive hex bolts.

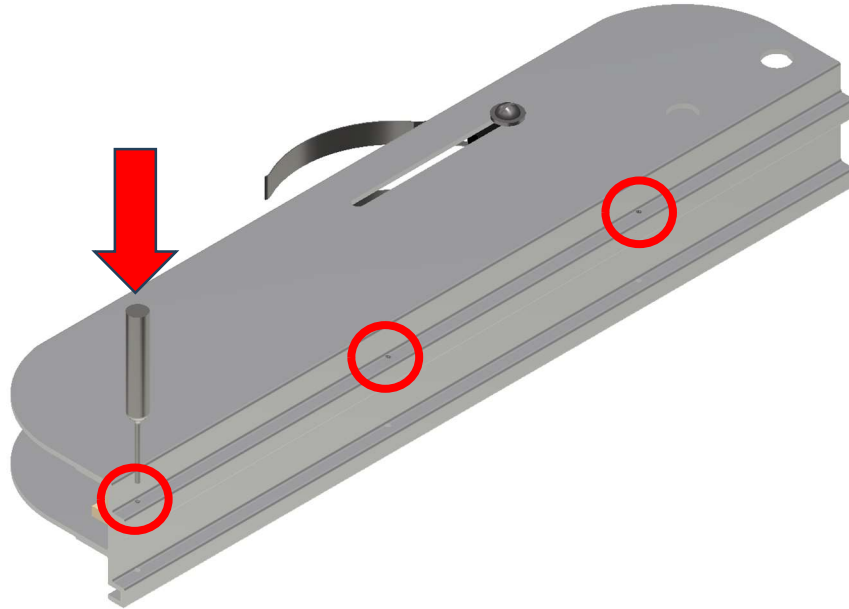
Step 2:

Set the throwing arm assembly upright on a workbench. There are three roll pins (circled below) holding the top polyurethane rail in place. Drive all three pins down and out of the arm using a 3/32" punch and a hammer. Once the pins are removed, the top poly rail can be removed from the throwing arm.



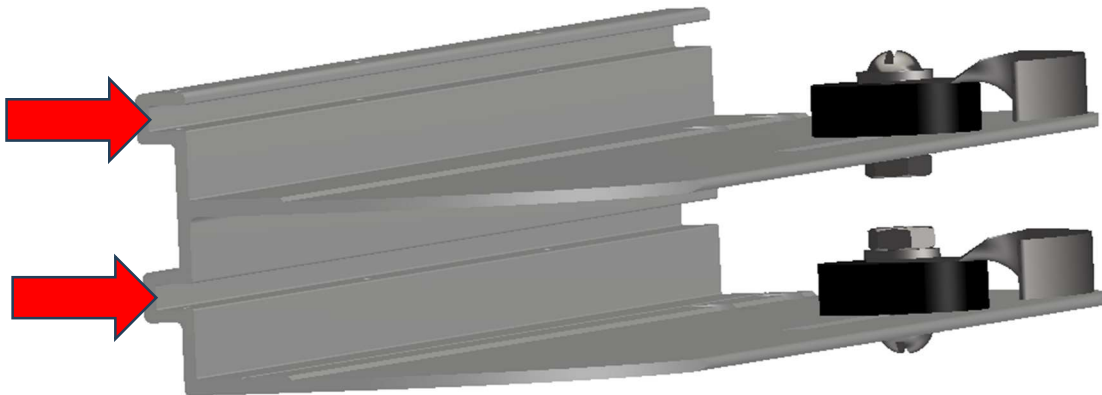
Step 3:

Now flip the throwing arm over and repeat this process for the bottom poly rail. Drive the three pins down and out of the arm, then remove the bottom poly rail.



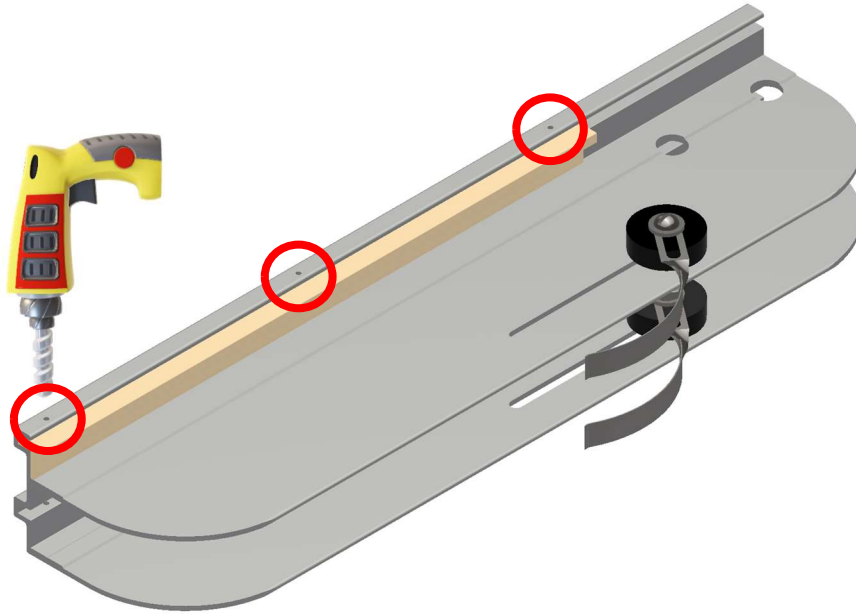
Step 4:

Inspect the slots in the throwing arm and make sure they are free of old polyurethane and dirt.



Step 5:

Insert a new poly rail into the throwing arm. The ends of these parts should be flush. Hold the poly rail in place and drill through the three existing holes in the throwing arm with a 3/32" drill bit, putting three holes in the poly rail.

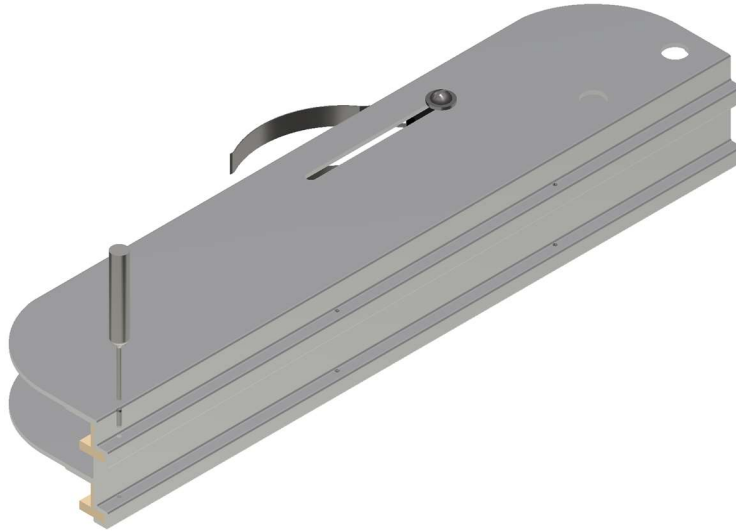
**Step 6:**

While continuing to hold the poly rail in place, drive three new roll pins into these holes using a 3/32" punch and a hammer.



Step 7:

Flip the arm over and repeat Step 5 and Step 6 for the bottom poly rail.



Step 8:

With two new poly rails and six new roll pins installed, the throwing arm can now be reinstalled onto the machine. Thread the two $\frac{3}{4}$ " drive hex bolts back into the carrier on the machine and tighten.
